

**Molise**



# Camping Village Centro Vacanze Molise

S.S. Adriatica Km 525  
86036 Marina di Montenero di Bisaccia - Montenero di  
Bisaccia (CB)

N 42° 3' 53,060"  
E 14° 46' 48,029"

<http://www.camping.it/centrovacanzemolise>  
[vacanze.molise@camping.it](mailto:vacanze.molise@camping.it)  
<http://www.campingmolise.it>

**Price List**  
**2022**

The price list comes directly from the Camping Village/Hotel.  
The companies Genial srl and [www.camping.it](http://www.camping.it) are not  
responsible of any changes or mistakes in the present price  
list.

# CENTRO VACANZE MOLISE

S. S. Adriatica al km 525 I-86036 Montenero di Bisaccia (CB)

Tel. e Fax+39 0873 803570

Winter : +39 338 5408323

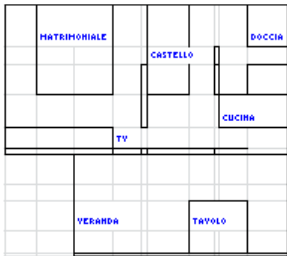
[www.campingmolise.it](http://www.campingmolise.it)

E mail: [info@campingmolise.it](mailto:info@campingmolise.it)

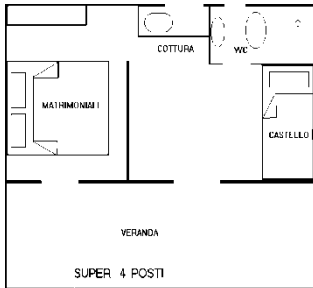
<b>Camping ****</b>		<b>PRICE LIST 2022</b>		
<b>DAILY RATES</b>		<b>LOW SEASON</b>	<b>MIDDLE SEASON</b>	<b>HIGH SEASON</b>
		<b>28.05 - 21.06</b> <b>23.08 - 11.09</b>	<b>22.06 – 15.07</b>	<b>16.07 – 22.08</b>
		<b>€</b>	<b>€</b>	<b>€</b>
<b>2 PERSONS</b>		<b>20,00</b>	<b>28,00</b>	<b>38,00</b>
<b>3 PERSONS</b>		<b>25,00</b>	<b>34,00</b>	<b>47,00</b>
<b>4 PERSONS</b>		<b>30,00</b>	<b>40,00</b>	<b>56,00</b>
<b>5 PERSONS</b>		<b>35,00</b>	<b>46,00</b>	<b>65,00</b>
<b>CHILD TILL 3 YEARS</b>		<b>FREE</b>	<b>FREE</b>	<b>FREE</b>
The price includes the assigned place and the number of people, car park, electricity, hot showers, the use of all services.				
		<b>LOW SEASON</b>	<b>MIDDLE SEASON</b>	<b>HIGH SEASON</b>
<b>MOTORHOME</b>		<b>1,00</b>	<b>2,00</b>	<b>3,00</b>
<b>VISITOR</b>		<b>6,00</b>	<b>9,00</b>	<b>13,00</b>
<b>Dog on a leash</b>		<b>2,00</b>	<b>3,00</b>	<b>5,00</b>
<b>Second car,trailer, boat, etc.</b>		<b>4,00</b>	<b>5,00</b>	<b>6,00</b>

		<b>village ***</b>		<b>Weekly prices 2022</b>			
<b>PERIODE</b>		<b>NG 5 PERS</b>	<b>SUPER 4 PERS €</b>	<b>GALEONE 4 PERS €</b>	<b>GOLETTA 3 PERS €</b>	<b>CARAVELLA 4 PERS €</b>	<b>CARAVELLA 3 PERS €</b>
<b>A</b>	<b>29.05 – 11.06</b>	<b>340,00</b>	<b>310,00</b>	<b>260,00</b>	<b>200,00</b>	<b>230,00</b>	<b>180,00</b>
<b>B</b>	<b>12.06 – 25.06</b>	<b>370,00</b>	<b>330,00</b>	<b>280,00</b>	<b>220,00</b>	<b>240,00</b>	<b>200,00</b>
<b>C</b>	<b>26.06 – 23.07</b>	<b>570,00</b>	<b>520,00</b>	<b>420,00</b>	<b>350,00</b>	<b>370,00</b>	<b>310,00</b>
<b>D</b>	<b>24.07 – 30.07</b>	<b>660,00</b>	<b>600,00</b>	<b>500,00</b>	<b>450,00</b>	<b>430,00</b>	<b>380,00</b>
<b>E</b>	<b>31.07 – 06.08</b>	<b>800,00</b>	<b>720,00</b>	<b>620,00</b>	<b>580,00</b>	<b>530,00</b>	<b>480,00</b>
<b>F</b>	<b>07.08 – 20.08</b>	<b>860,00</b>	<b>800,00</b>	<b>700,00</b>	<b>630,00</b>	<b>570,00</b>	<b>500,00</b>
<b>G</b>	<b>21.08 – 27.08</b>	<b>450,00</b>	<b>400,00</b>	<b>350,00</b>	<b>280,00</b>	<b>290,00</b>	<b>250,00</b>
<b>A</b>	<b>28.08 – 10.09</b>	<b>340,00</b>	<b>310,00</b>	<b>260,00</b>	<b>200,00</b>	<b>230,00</b>	<b>180,00</b>
						<b>Weekly rates</b>	
WEEKLY BEACH SERVICE: SUN UMBRELLA AND TWO DECK-CHAIRS Mandatory from 10/6 – 10/09 for NG, Super, Galeone and Goletta accommodations						€ 80,00	
<b>TOURIST MENU</b>						€ 15,00	
Prices include: accommodation, parking, electricity, water, gas, the use of all services.Vat included. Weekly rates, arrival Saturday 4 p.m., departure Saturday 10 a.m.							
Accommodations are thought to be used by the maximum number of people contained in their name. It is not possible to add beds or people to that number.							
<b>PETS ARE NOT ALLOWED IN BUNGALOWS</b>							

## ACCOMODATION DESCRIPTION

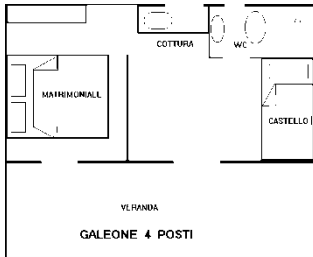


**NG 5 PERSONS** Two-roomed wooden bungalow divided into one room with bunk bed for 3 children and one double bedroom, kitchenette fully furnished and equipped, bathroom with warm shower, verandah with table and chairs. Beds are not provided with sheets and blankets.



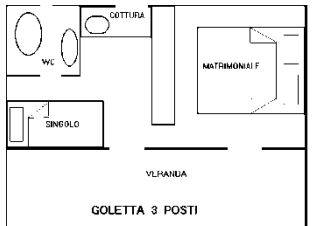
### SUPER 4 PERSONS

Two-roomed mini-apartment. First room with bulk bed and second double bedroom, kitchenette fully furnished and equipped, bathroom with hot shower, verandah. Beds are not provided with sheets and blankets.



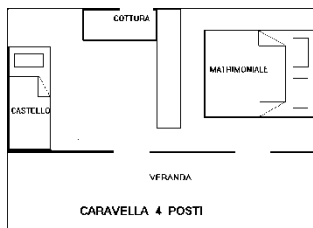
### GALEONE 4 PERSONS

Two-roomed wooden bungalow divided into one room with bunk bed and one double bedroom, kitchenette fully furnished and equipped, bathroom with cold shower (hot showers are free and available 24 hours, they are located in a centralized group close to the bungalows), verandah. Beds are not provided with sheets and blankets.



### GOLETTA 3 PERSONS

**Two-roomed** pinewood bungalow divided into a double bedroom and a single bedroom, kitchenette fully furnished and equipped, lavatory (hot showers are free and available 24 hours, they are located in a centralized group close to the bungalows), verandah. Beds are not provided with sheets and blankets.



### CARAVELLA 4 PERSONS

Two-roomed pinewood bungalow divided into one room with bunk bed and one double bedroom, kitchenette fully furnished and equipped, verandah. Lavatory is not available inside but located in a centralized group very near where you can also find free hot showers.

## Village regulations

### Begin and end of stay

Arrival should not be before 4 pm and departure before 10 am on Saturday

### Minimum stay

The minimum stay during high and medium season is two weeks, during low season we accept one-week stays. Prolonged stay is possible according to availability.

### New Arrival

The accommodation of a new guest in the same apartment\bungalow is possible only according to availability of beds in the same. Accordingly the new guest will be advised about the fare to pay before his check-in so that he will be able to arrange for settlement.

### Advanced departure

In case of advanced departure there will be no reduction either on the published fare or on the number of persons.

### Payment

Our guest should arrange for settlement for the entire period of stay at his\her arrival after having carefully read our condition (plus EUR.30,00 for final cleaning and a deposit of EUR.100,00 that will be returned at the end of the stay).

**Arrival of guest's visitors**

Guest's visitors are accepted by payment of an entrance card of EUR 13,00 in high season. This card has a maximum validity of 8 hours. The visitor has to leave within 08.00 p.m. of the same day of arrival. After 08.00 p.m. no guests will be accepted.

**Reservations**

Reservations can be made by telephone or by sending the enclosed form. At receipt of it we will send you a confirmation letter asking a deposit of 30% of the total amount to to pay. Settlement is due an arrival.

**Payment**

Reservations are valid only when also a deposit of 30% of the whole payment is sent by return. Settlement is due on arrival.

**Cancellations**

Up to 30 days before 50% of the deposit will be refunded, after no refund will be returned.